

Airwell AQL 25 CO B Coil STD pump

Specifications

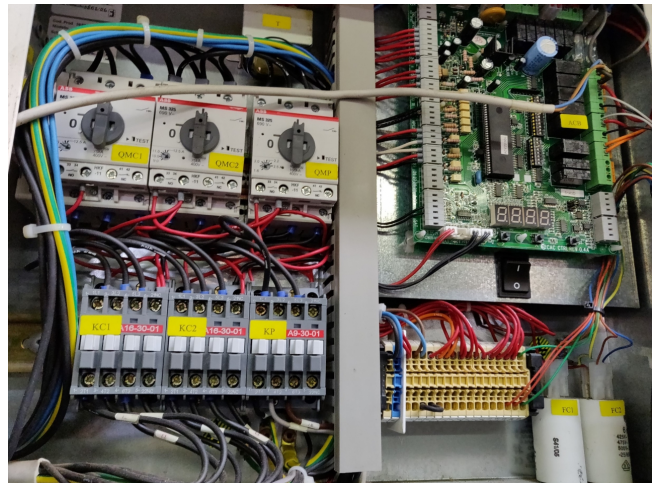
| | |
|------------------|---------------------------|
| Brand | Airwell |
| Type | AQL 25 CO B Coil STD pump |
| Product type | Air Cooled Chiller |
| Capacity kW | 26 |
| Capacity Tons | 7,39 |
| Refrigerant | Freon |
| Refrigerant Type | R407C |
| Pump | ✓ |
| Hydronic Module | ✓ |
| Weight in kg. | 265 |
| Sizes | 1477x516x1607 mm (LxWxH) |
| Remarks | YOB 2006 |
| Stock | 1 |



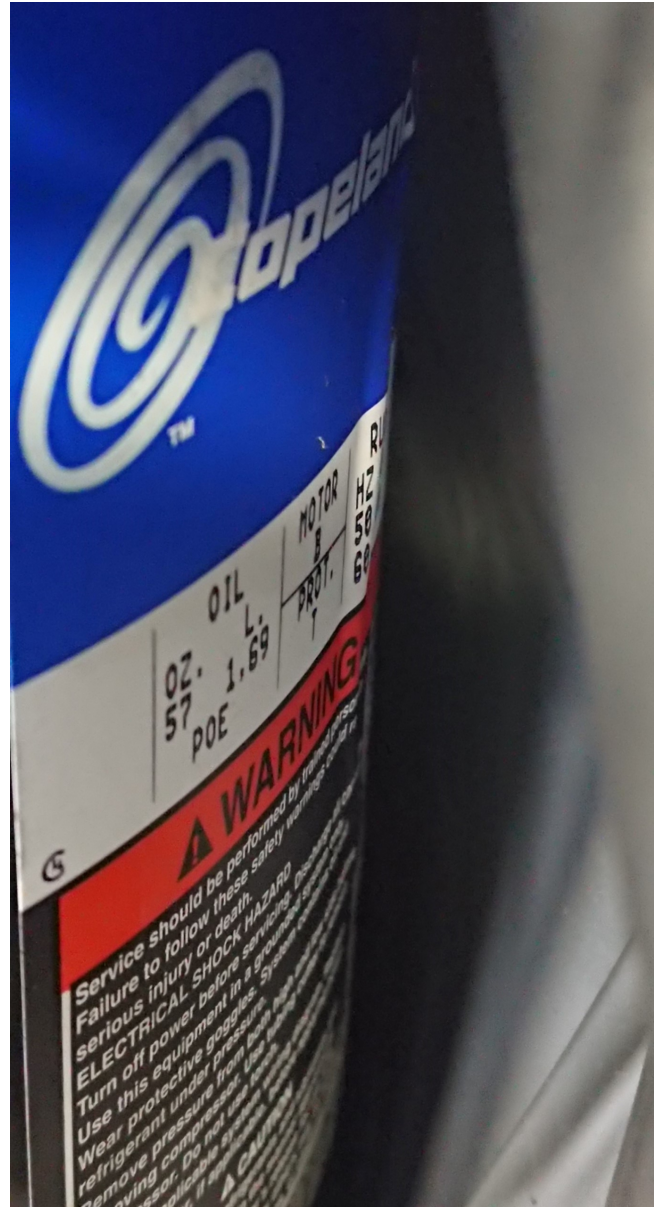
Description

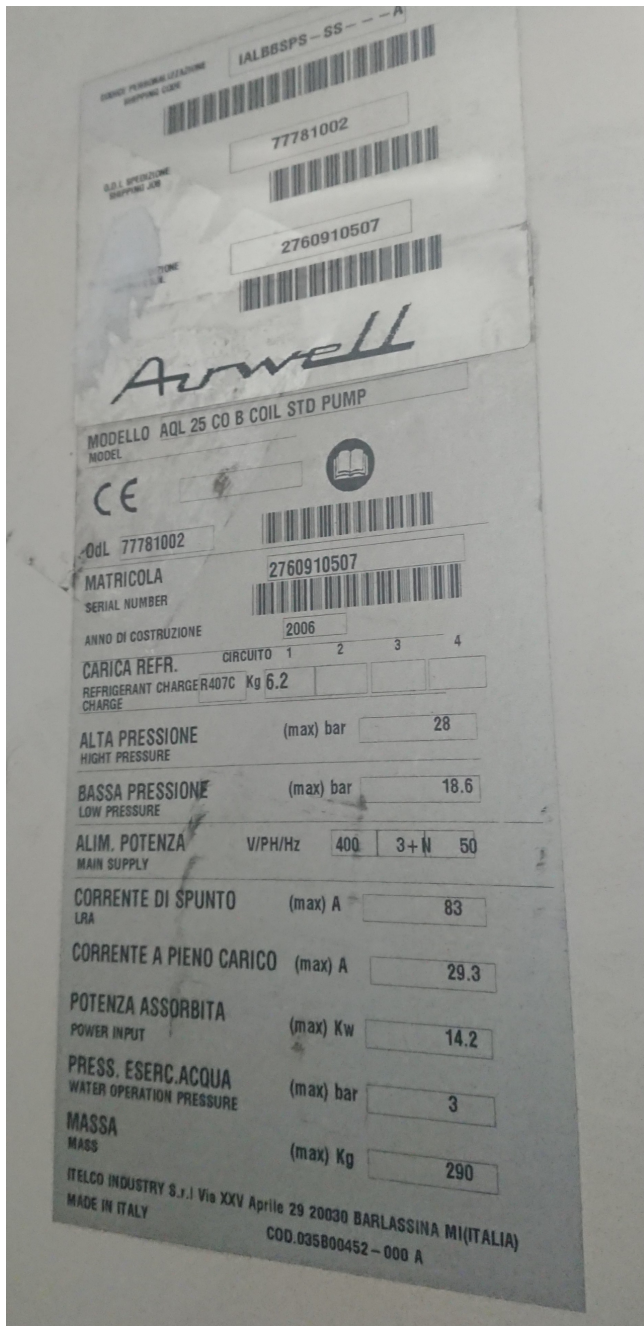
Used Airwell AQL 25 CO B Coil STD pump

Used but in very good condition Airwell AQL 25 CO B Coil STD pump with 2 scroll compressors and 2 fans, manufacturing year 2006. *All components of this used chiller will be tested on good working, leak free condition (electro engines), coils, bearings, fans) Choosing HOSBV means buying with warranty. We perform an industrial cleaning and rust spots will be covered. Also, we can arrange your shipment.









Technical characteristics - HFC 407C

| AQL sizes | 20 | 25 | 30 | 35 | 40 | 50 | 60 | 70 | 80 | |
|---|--|---------|---------|---------|---------|-------------------|---------|---------|---------|------|
| Power supply (V / Ph / Hz) | 400/3/N/50 | | | | | | | | | |
| Cooling capacity * | kW | 21.5 | 26.0 | 29.9 | 34.2 | 42.0 | 46.5 | 56.9 | 67.3 | 75.4 |
| Total power consumption with pump | kW | 8.4 | 10.0 | 11.4 | 12.2 | 16.1 | 19.4 | 23.9 | 28.1 | 30.7 |
| Total power consumption | kW | 7.6 | 9.2 | 10.6 | 11.4 | 15.4 | 18.7 | 22.8 | 27.0 | 29.6 |
| COP | | 3.0 | 3.0 | 3.0 | 2.9 | 2.9 | 2.6 | 2.7 | 2.7 | 2.7 |
| Refrigerant charge | kg | 6.2 | 6.2 | 6.2 | 7.6 | 9 | 9 | 10 | 11 | 16 |
| Lw sound power levels | dB(A) | 75 | 76 | 76 | 77 | 82 | 82 | 84 | 87 | 87 |
| Compressors | | | | | | | | | | |
| Type | Scroll - Hermetically sealed | | | | | | | | | |
| Quantity | 2 | 2 | 2 | 2 | 2 | 2 | 2 | 2 | 2 | |
| Capacity reduction stages | 2 | 2 | 2 | 2 | 2 | 2 | 2 | 2 | 2 | |
| Minimum capacity | % | 50 | 50 | 50 | 50 | 45 | 36 | 36 | 45 | 50 |
| Safety presostat | HP (fixed set point) LP transducer HP transducer | | | | | | | | | |
| Evaporator | | | | | | | | | | |
| Type | Brazed stainless steel plates | | | | | | | | | |
| Maximum pressure refrigerant side | bar | 30 | | | | | | | | |
| Maximum pressure water side | bar | 10 | | | | | | | | |
| Safety | Differential presostat | | | | | Water flow switch | | | | |
| Anti-freaza protection heating resistance | | 1 | 1 | 1 | 1 | 1 | 1 | 1 | 1 | 1 |
| Water volume | litres | 1.67 | 2.2 | 2.44 | 2.44 | 3.44 | 4.33 | 5.33 | 6.33 | 7.10 |
| Condenser | | | | | | | | | | |
| Type | 3/8" copper tube - Louvred aluminum fins | | | | | | | | | |
| Fans | | | | | | | | | | |
| Quantity | 2 | 2 | 2 | 2 | 1 | 1 | 1 | 1 | 1 | |
| Fan diameter | mm | 610 | 610 | 610 | 610 | 800 | 800 | 800 | 800 | |
| Speed (High/Low) | rpm | 640/500 | 640/500 | 640/500 | 640/500 | 700/500 | 700/500 | 700/500 | 900/520 | |
| Max air flow (HS) | m ³ /h | 11200 | 11200 | 11200 | 11200 | 15500 | 15500 | 15500 | 21000 | |